

Bastelbogen Hotel

von Frank Nolting



Liebe Bastelfreunde,

mit diesem Bastelbogen könnt ihr ein kleines City-Hotel bauen.

Ich empfehle den Druck auf Tonpapier oder Fotokarton mit der Stärke 300 g/m².

Dieses Dokument enthält 2 Versionen, eine zum Ausdrucken mit einem Farbdrucker und die andere in schwarz-weiß zum Selberanmalen oder zum Drucken auf farbigem Tonpapier.

Wer die farbige Version drucken möchte, der druckt bitte die Seiten 4 bis 14.

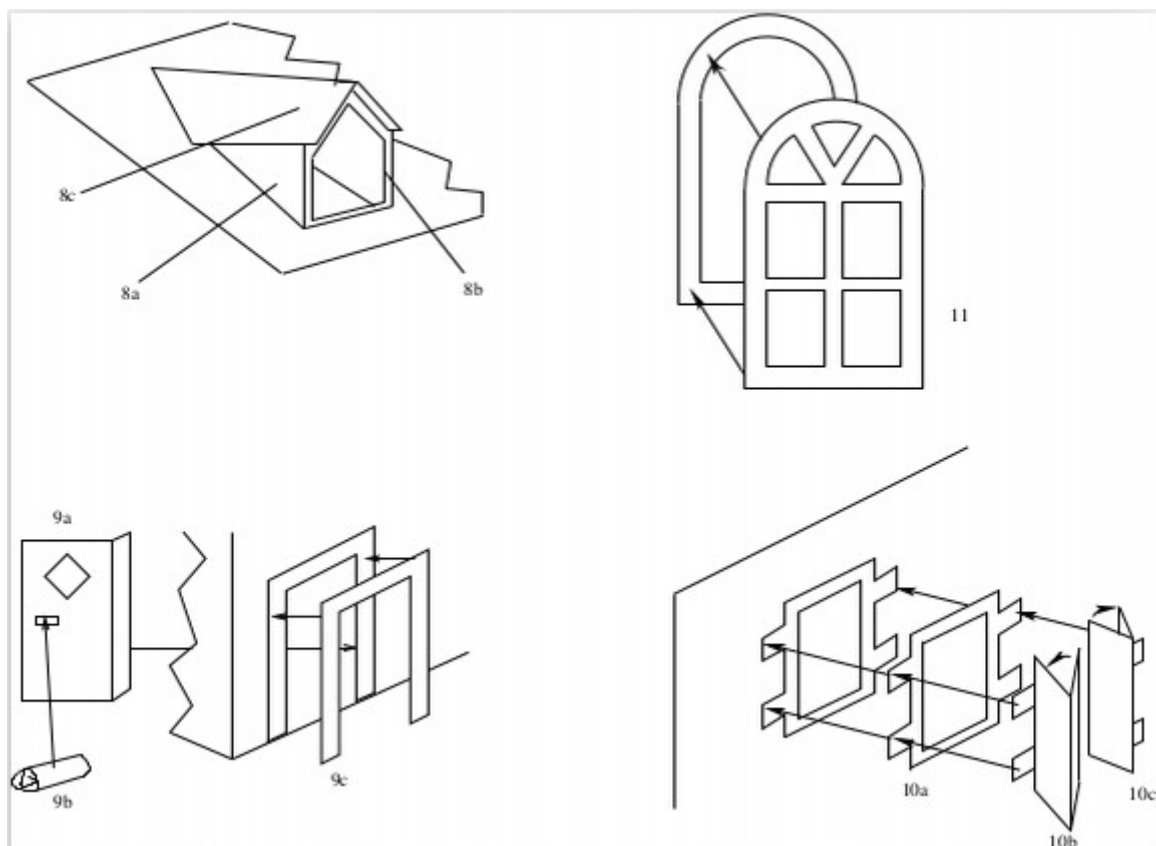
Wer die schwarz-weiß Version drucken möchte, der druckt bitte die Seiten 8 bis 18.

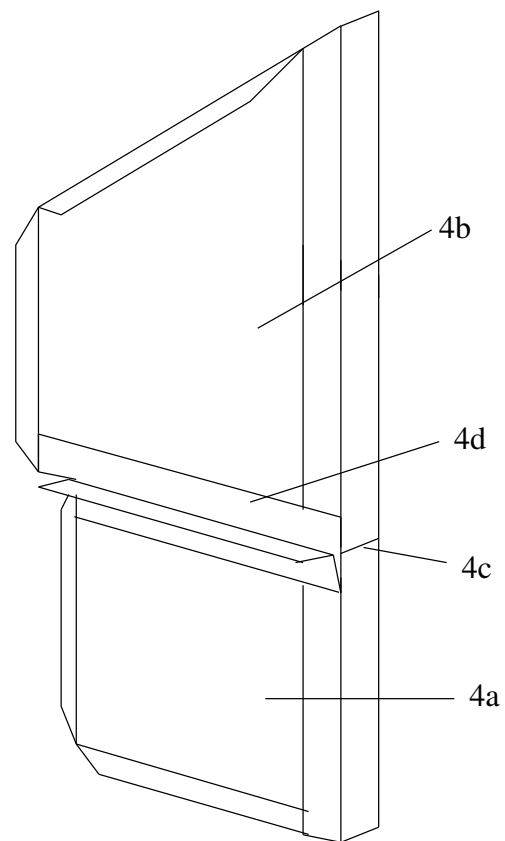
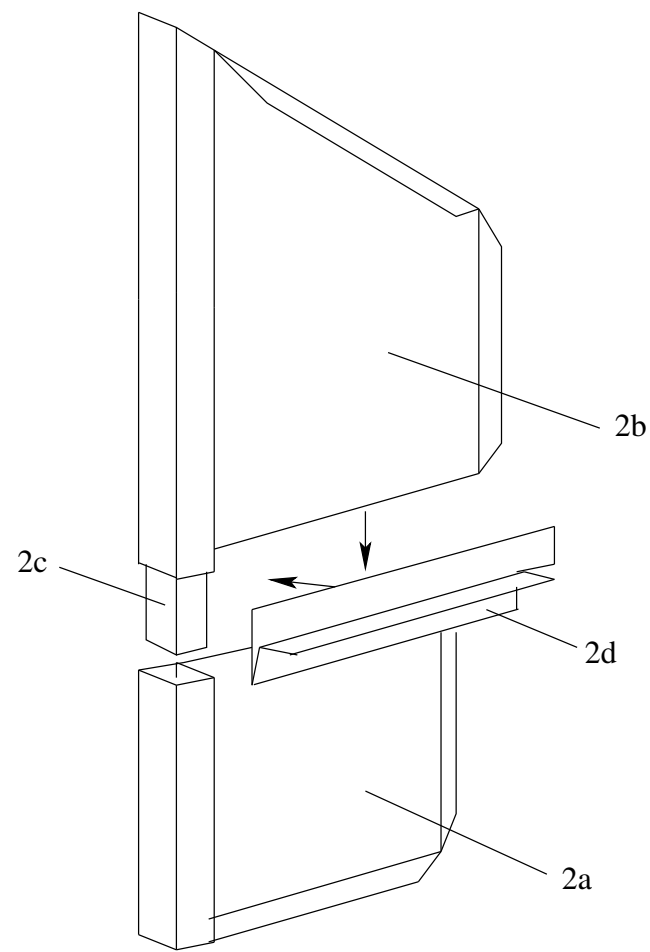
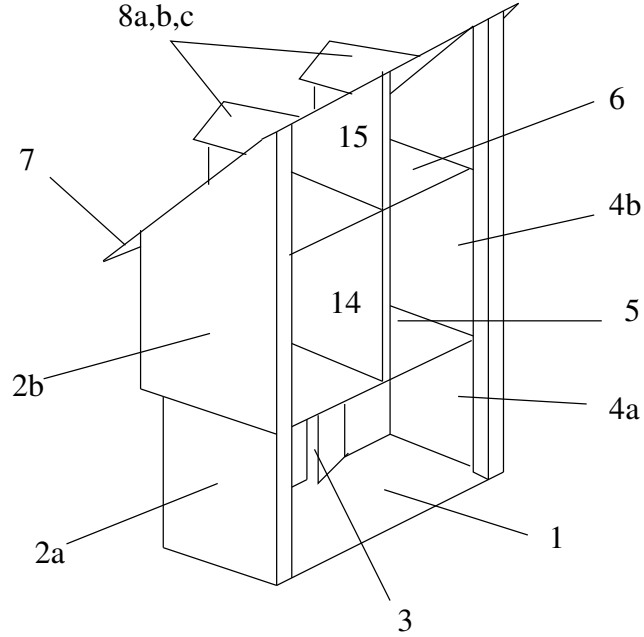
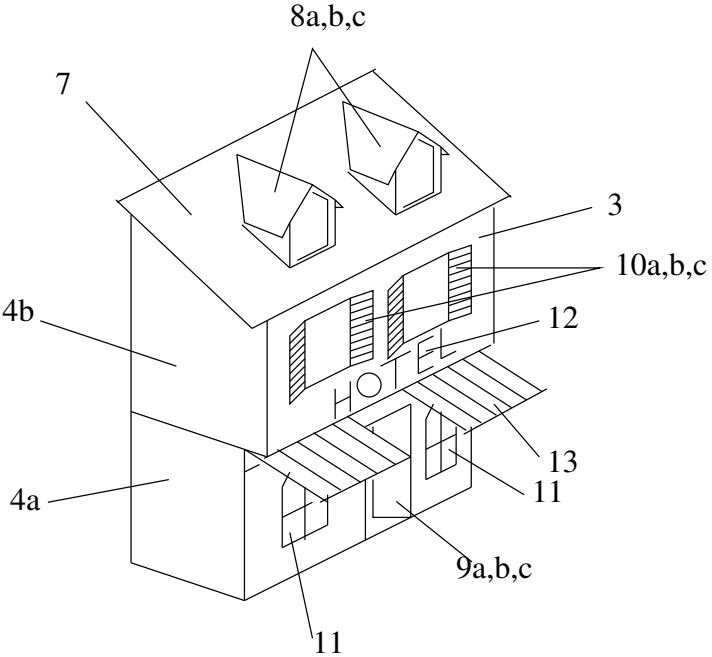
Das Dach und die Klappläden kann man, wie man auf dem Foto vorne sieht, auch mit roter Wellpappe gestalten. Den Boden, die Zwischendecke und das Dach solltet ihr mit festem Karton verstärken. Die Fenster und die Türen bitte ausschneiden.

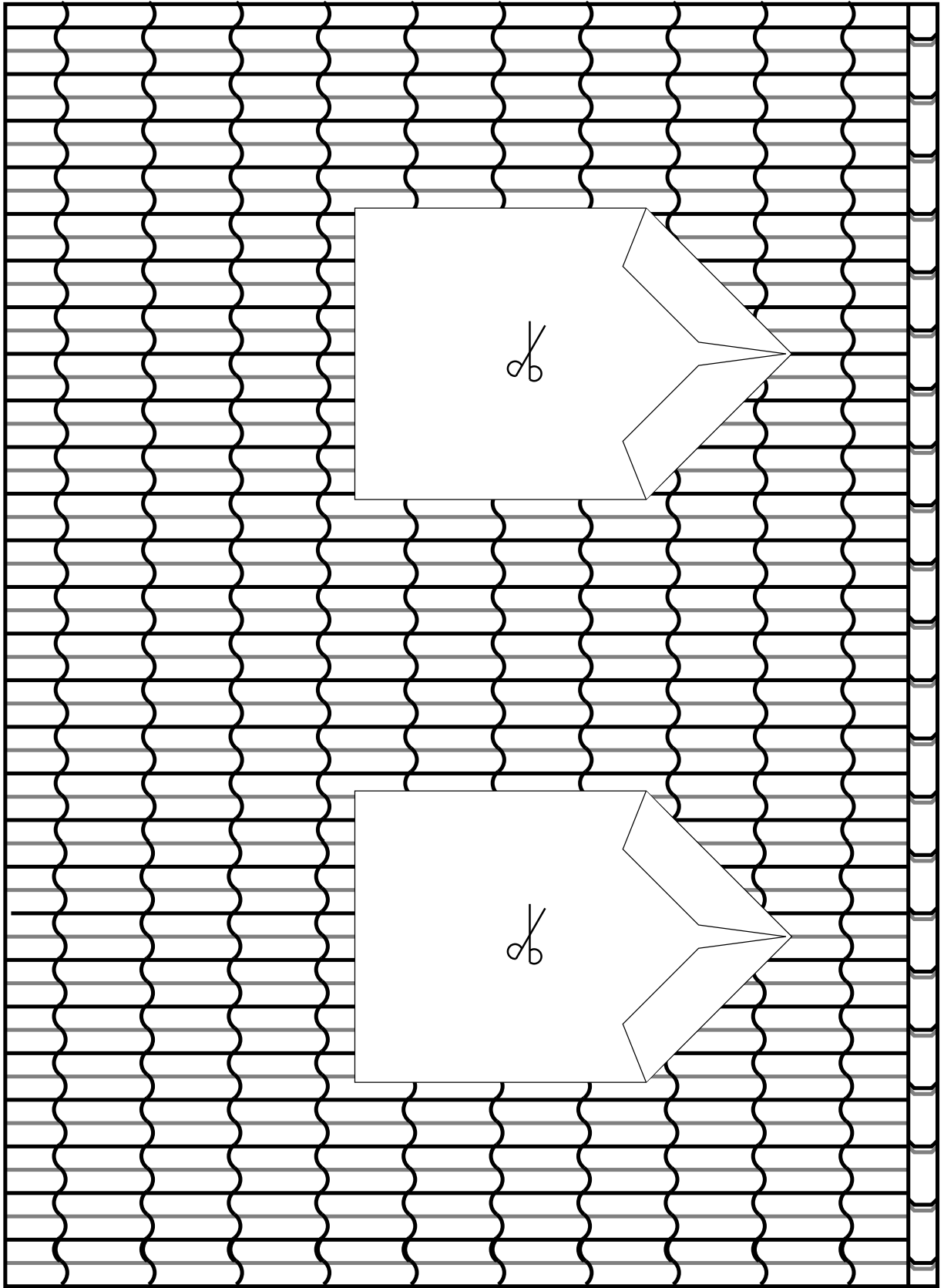
Kleiner Tipp: Wenn ihr die Knickkanten vorher mit einem stumpfen Messer leicht anritzt, dann lassen sich die Kanten besser und gerade abknicken.

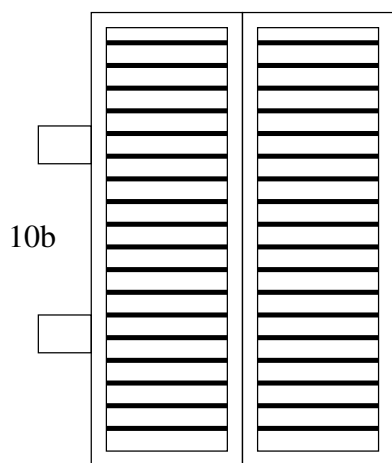
Ihr dürft diesen Bastelbogen im PDF Format gerne an andere weitergeben und kopieren aber nicht kommerziell verwerten.

Viel Spaß beim Basteln,
Euer Frank

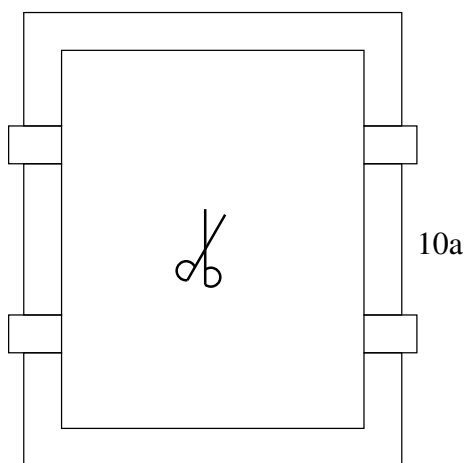




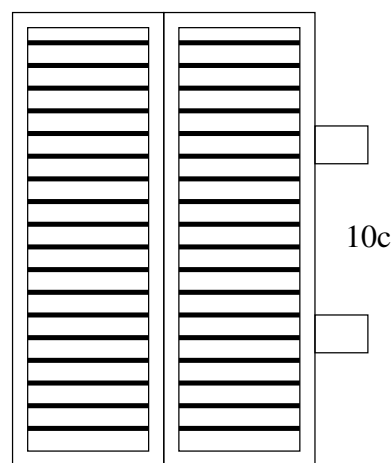




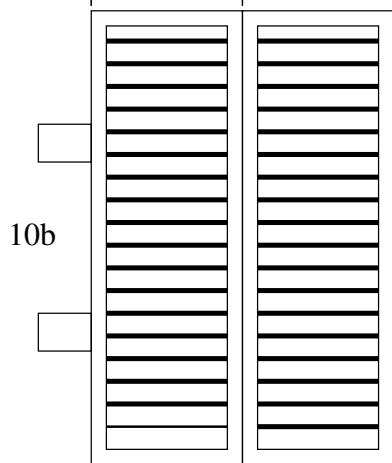
10b



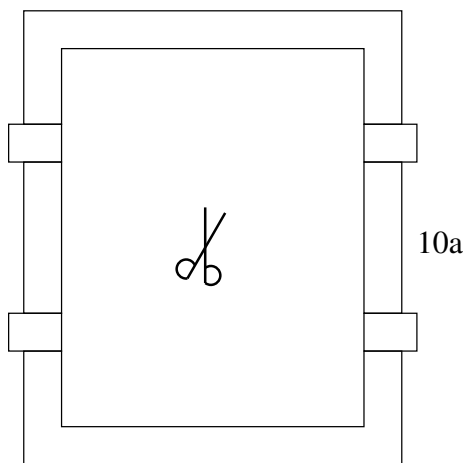
10a



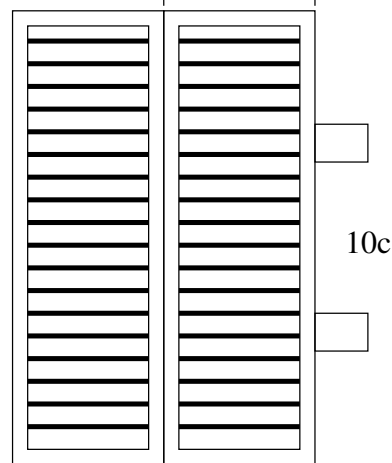
10c



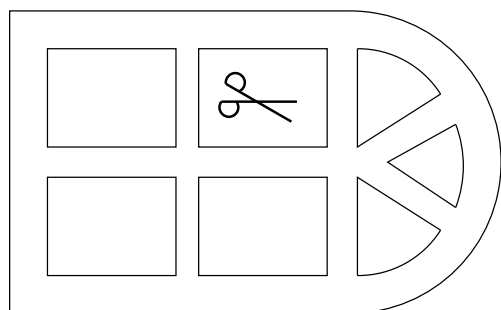
10b



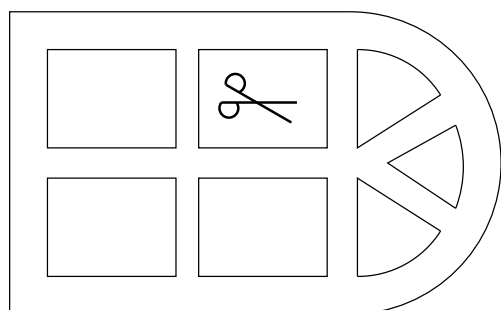
10a



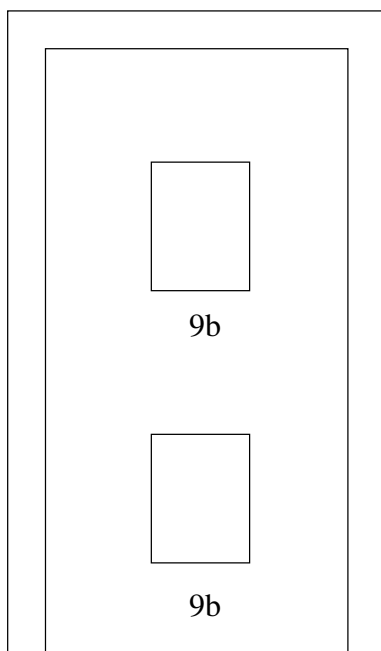
10c



11



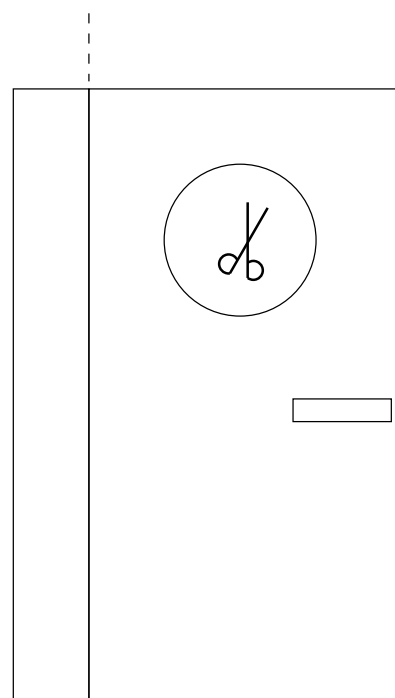
11



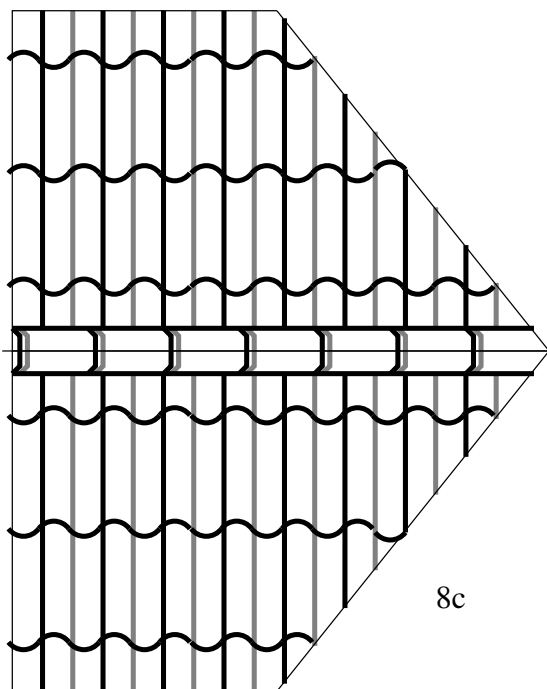
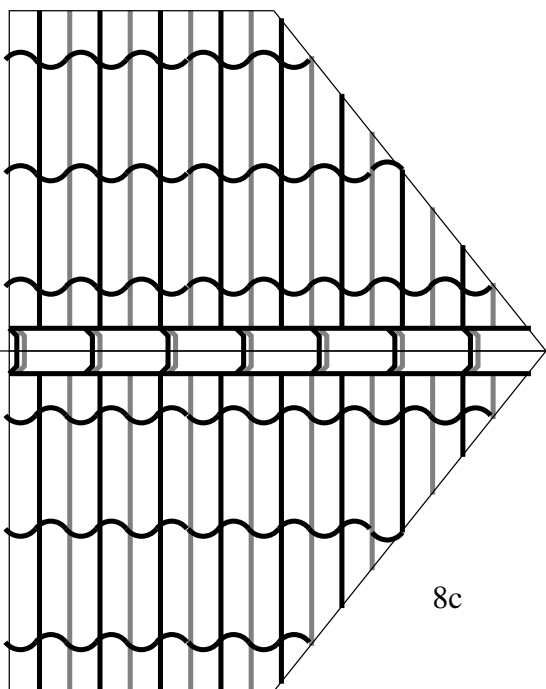
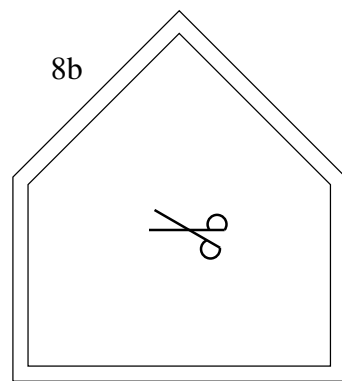
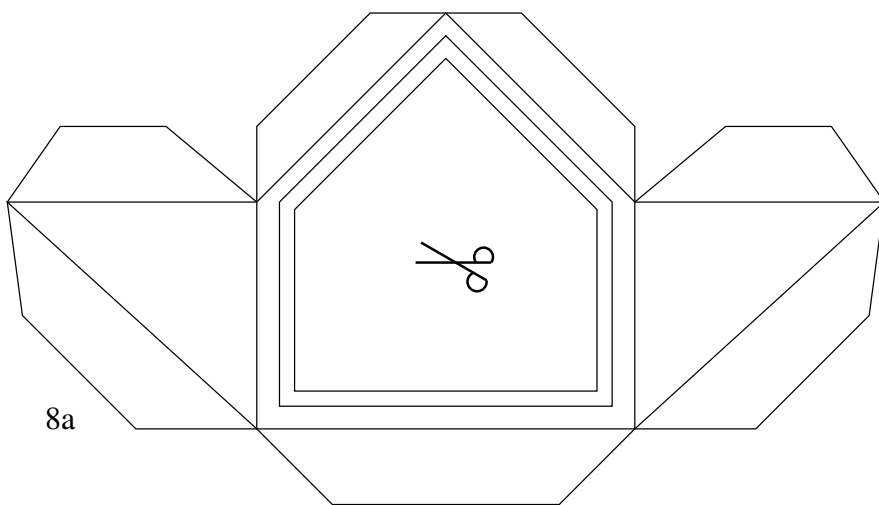
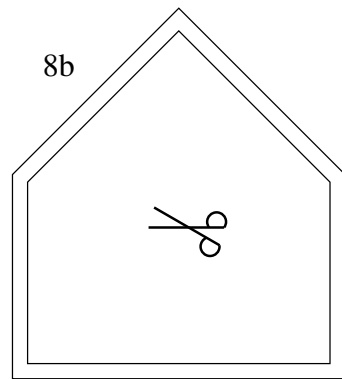
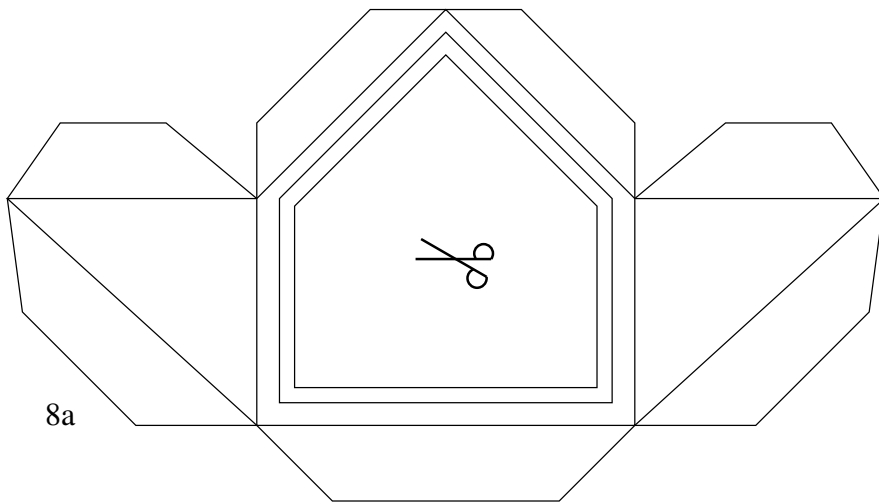
9b

9b

9c

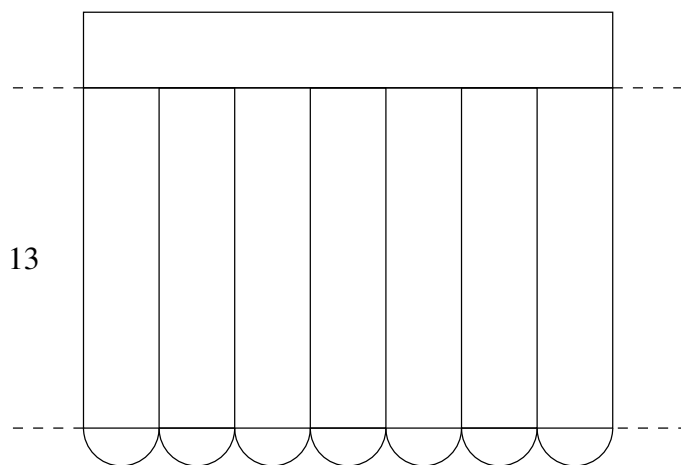
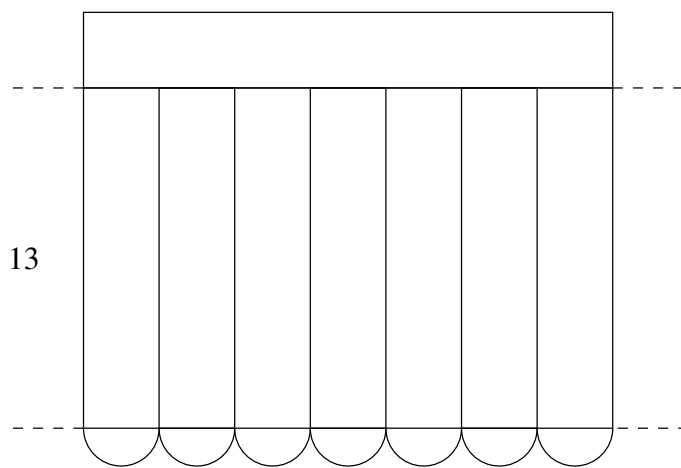


9a

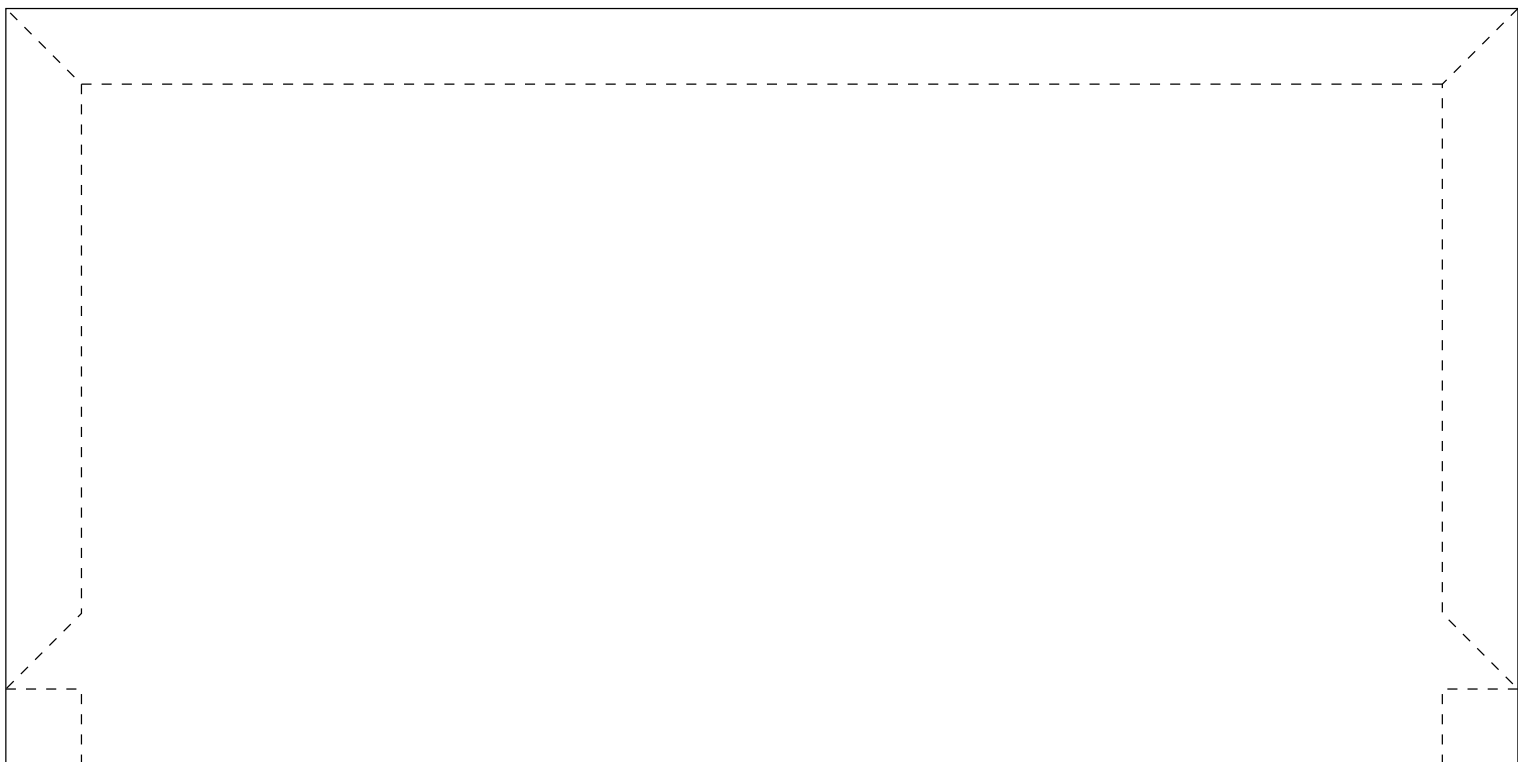


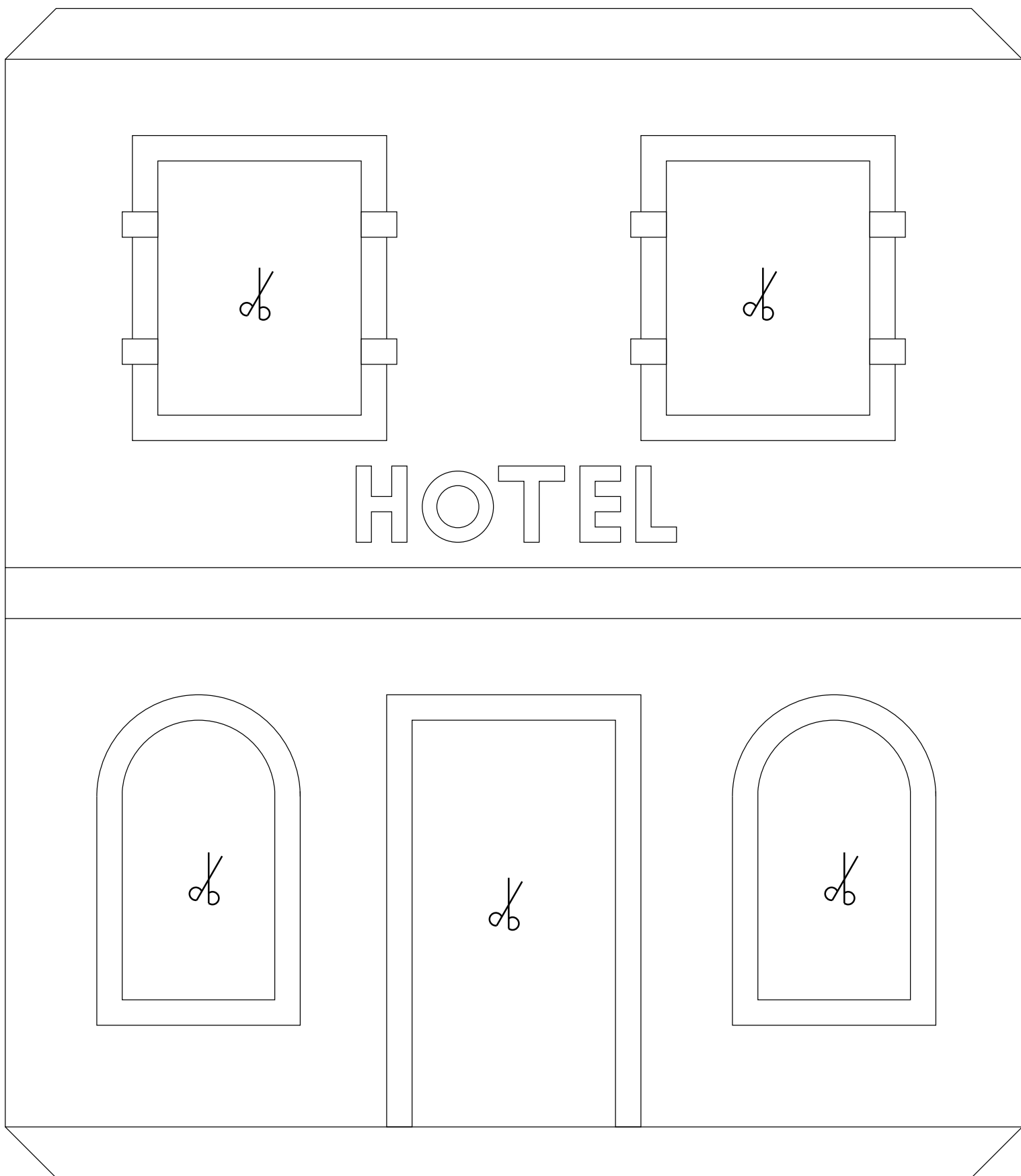
HOTEL

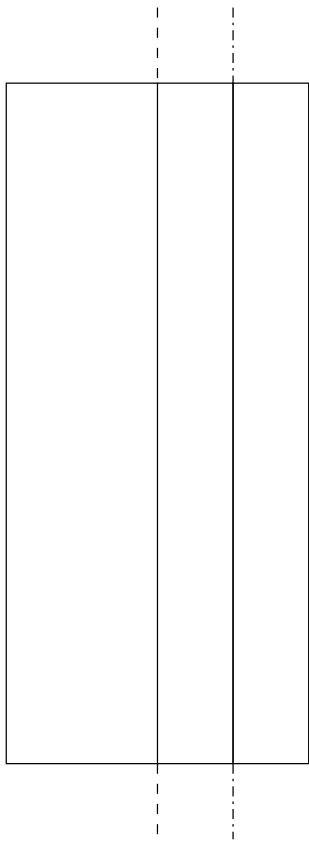
12



1



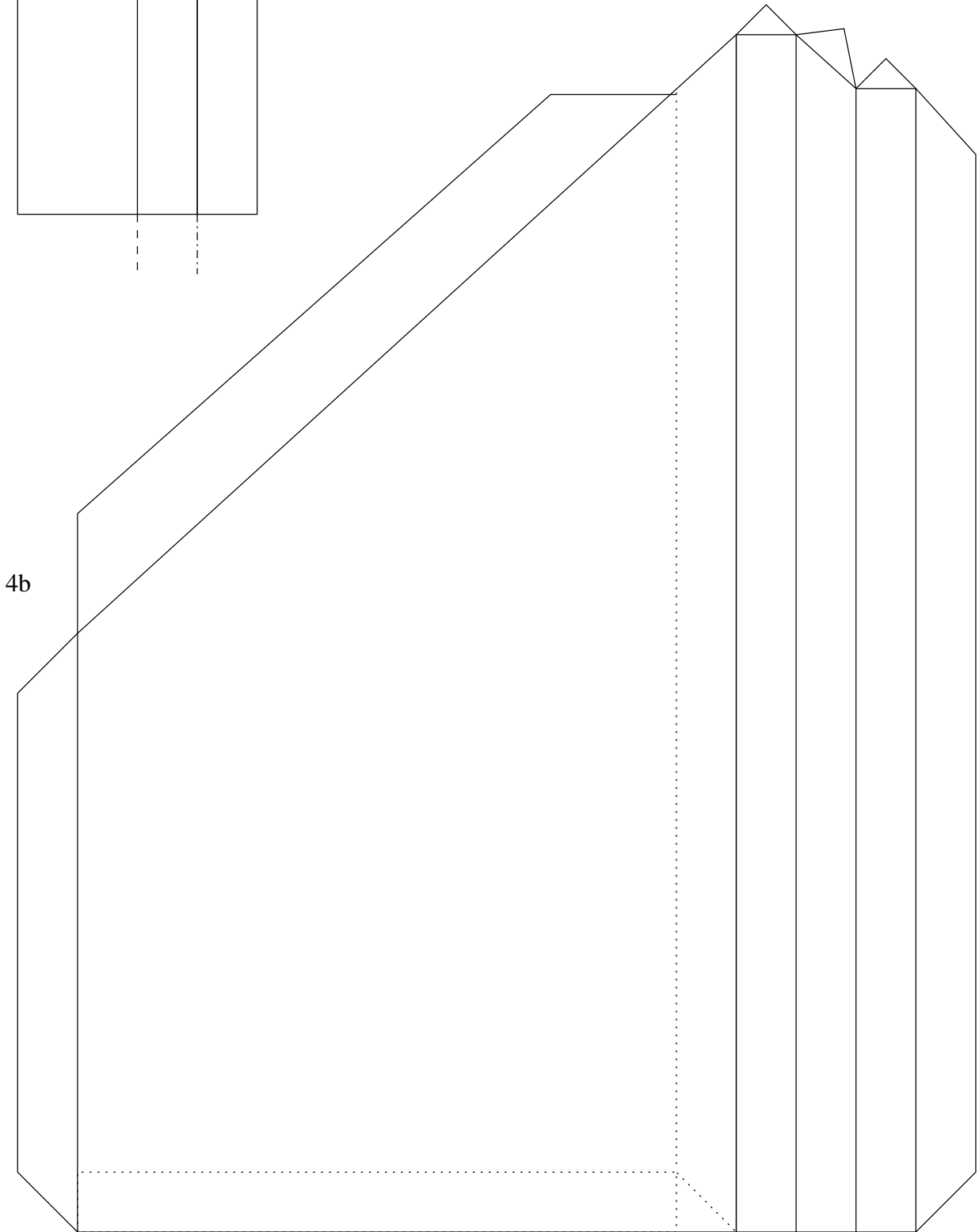




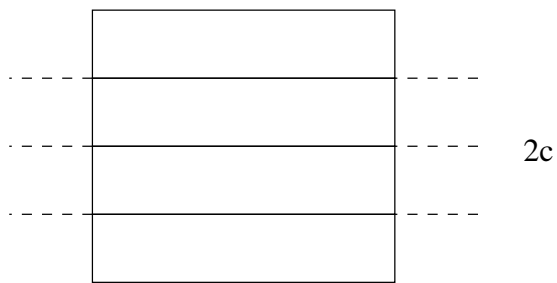
4d



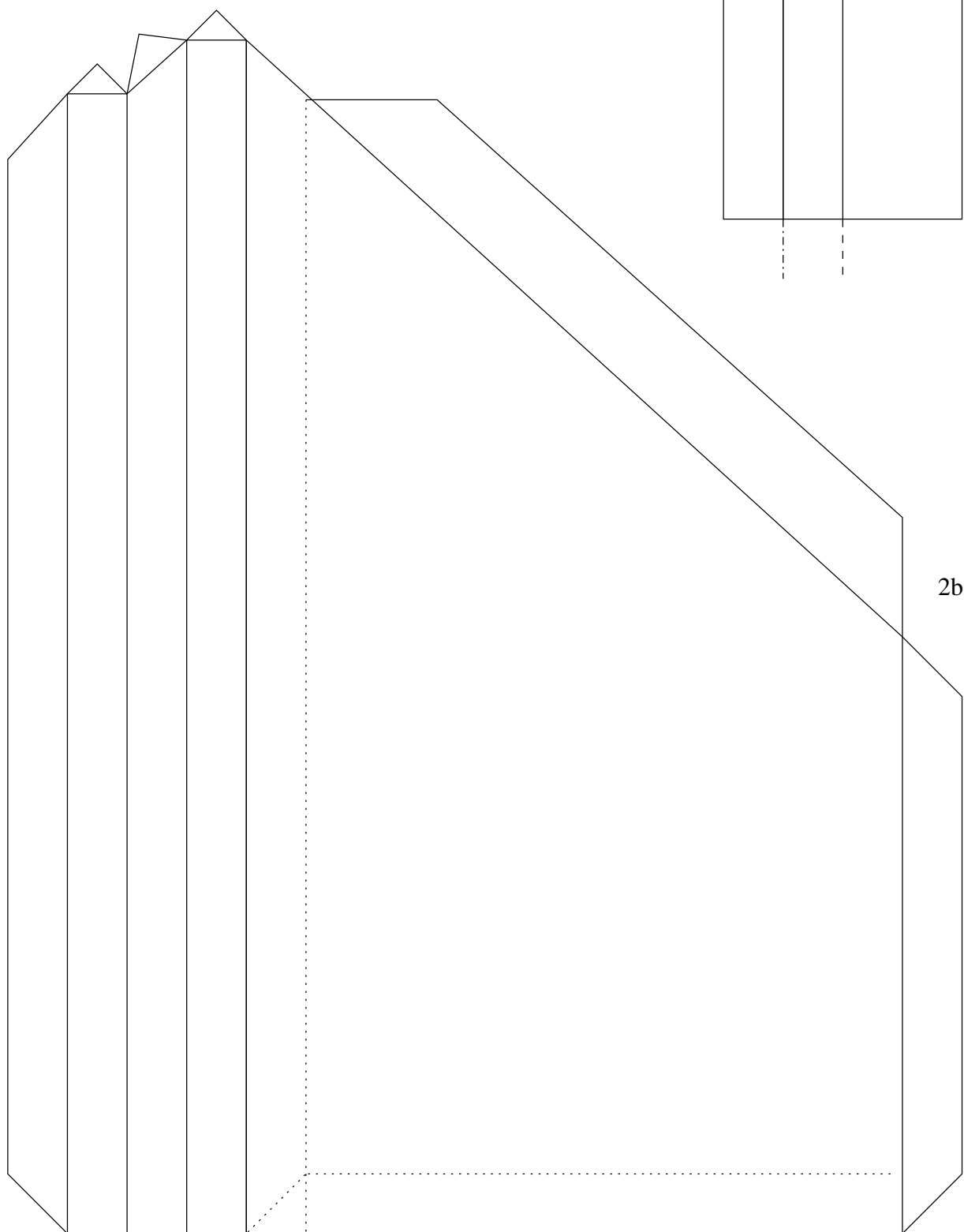
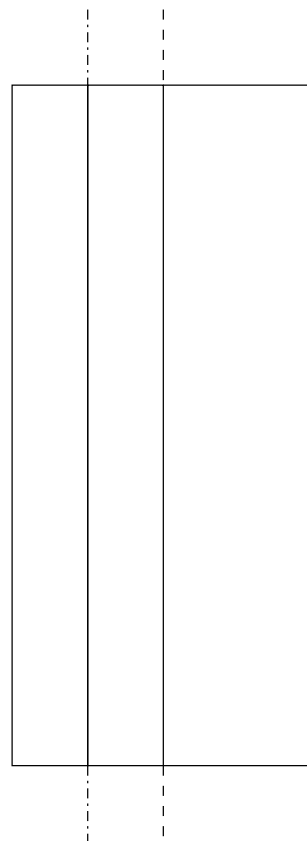
4c



4b

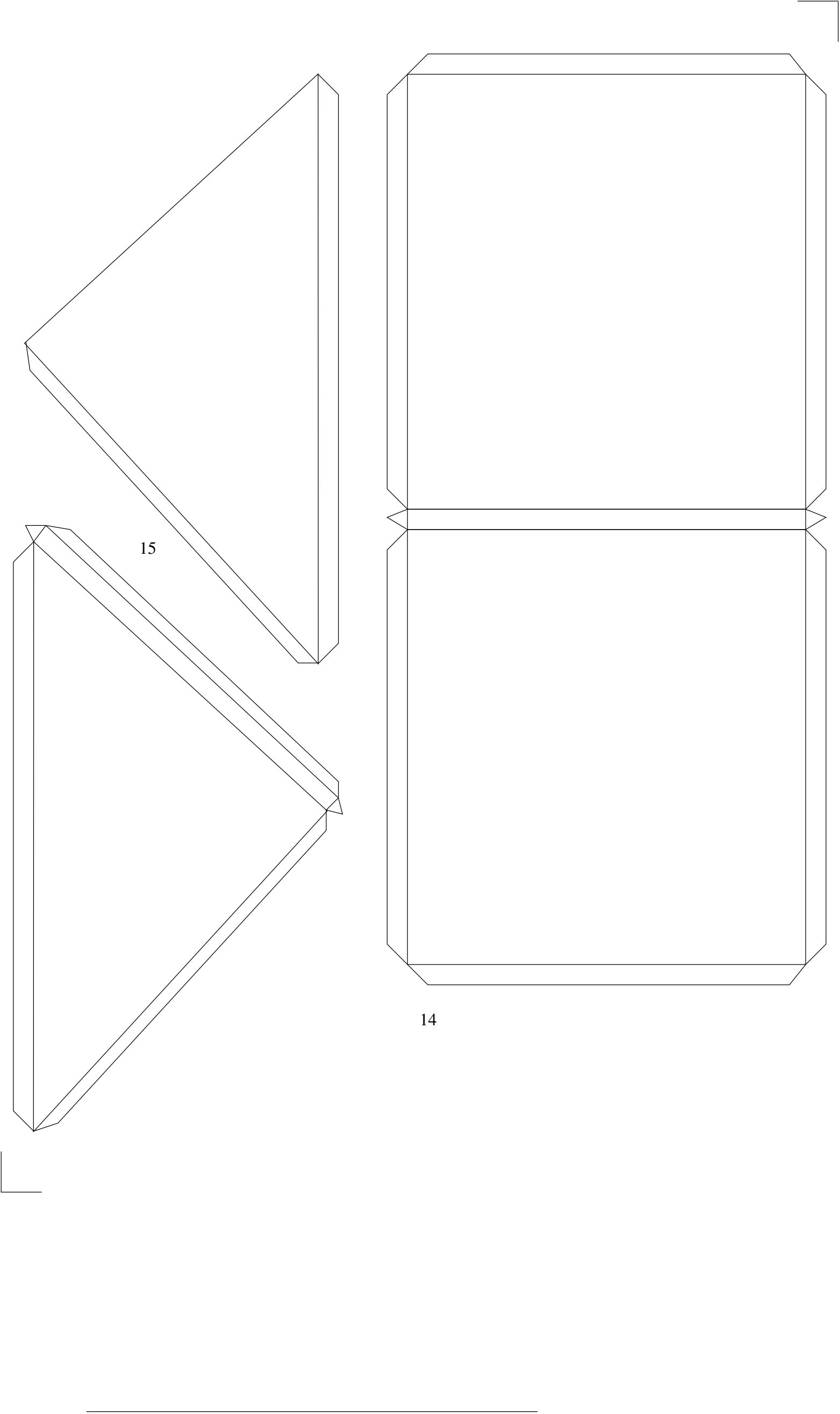


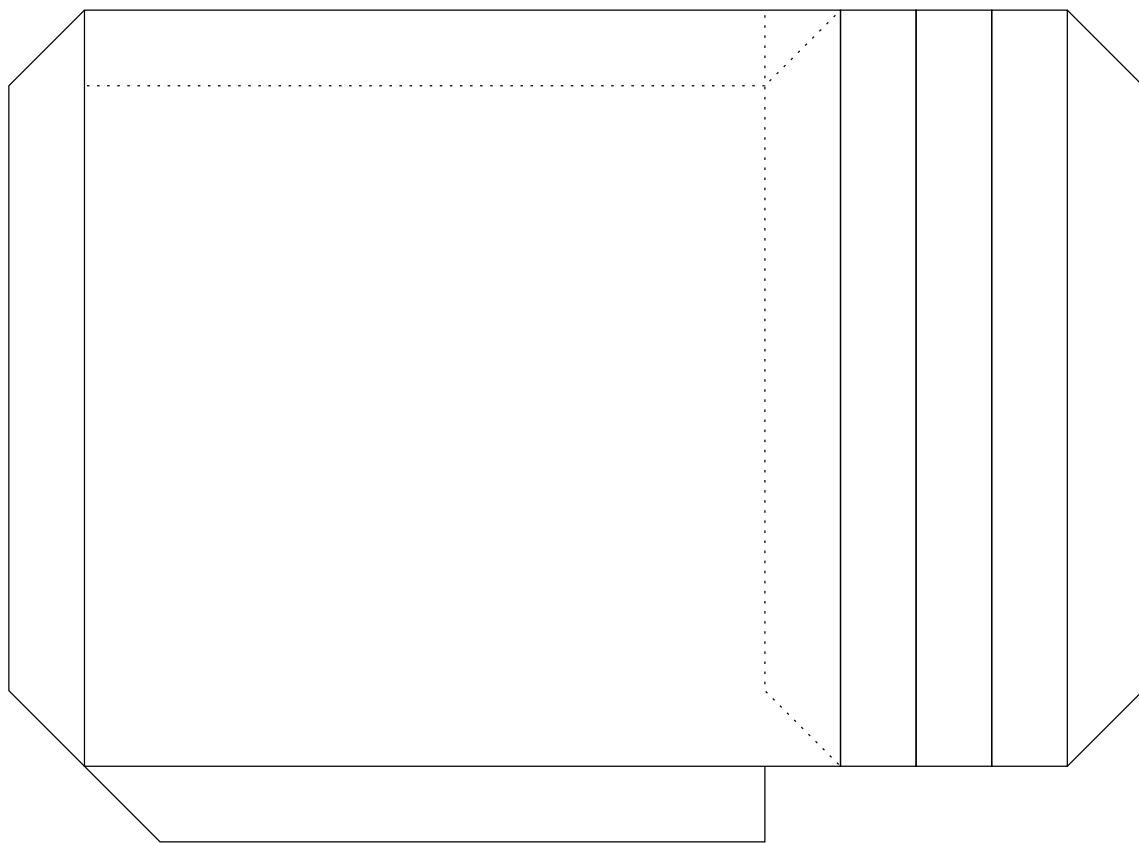
2d



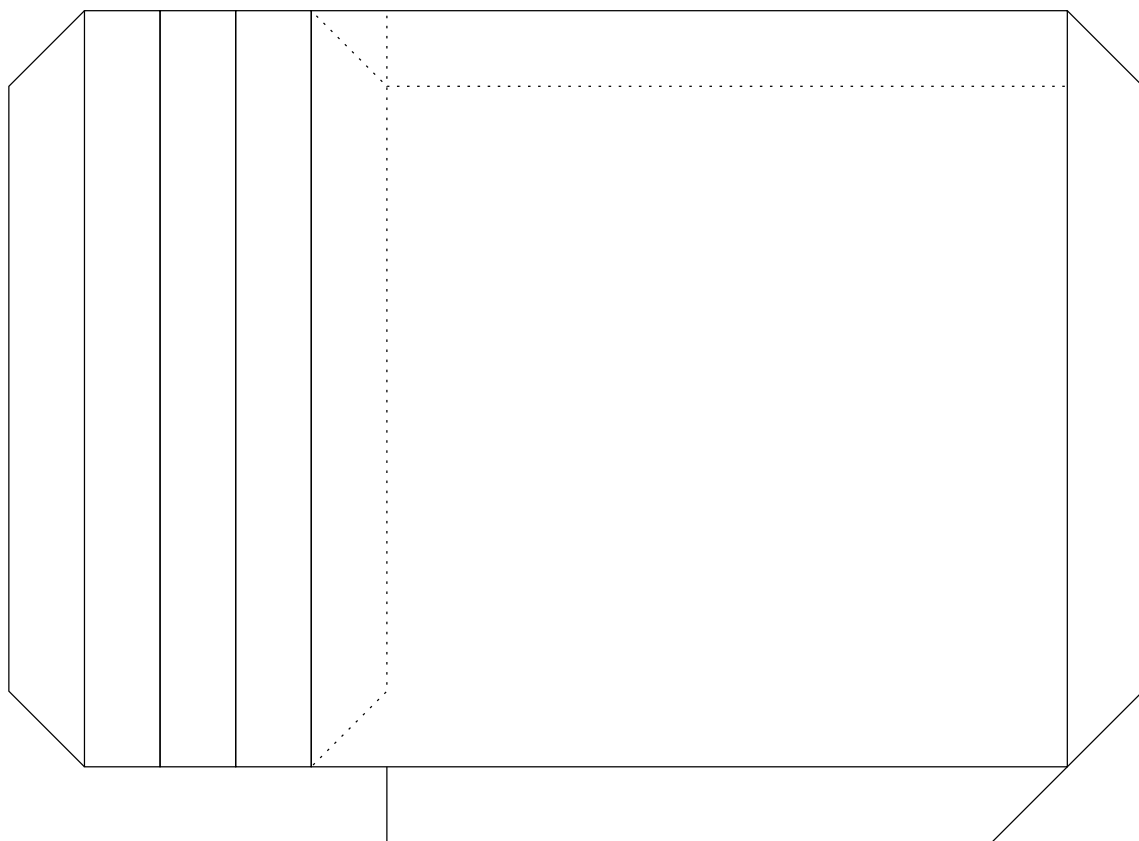




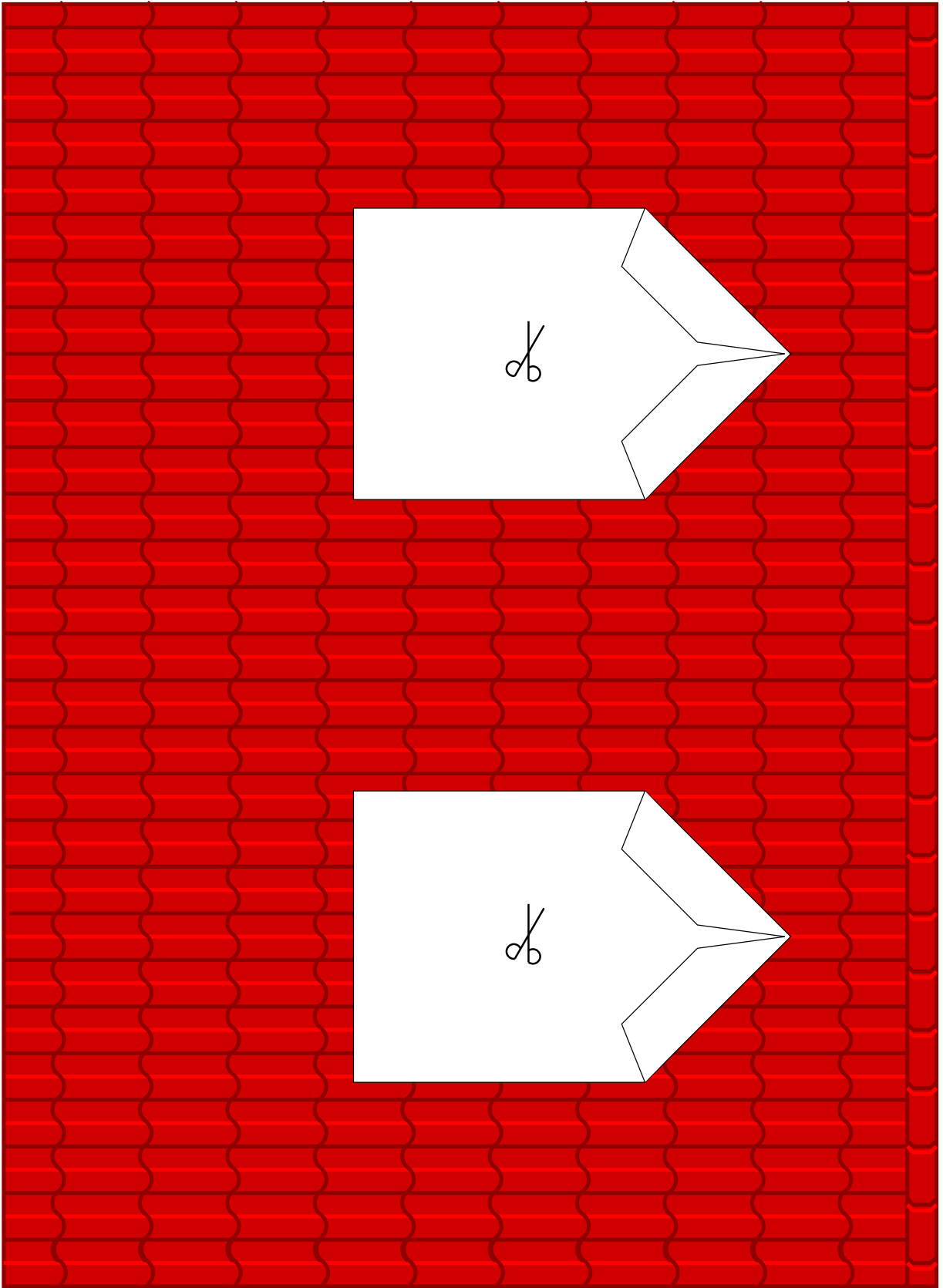


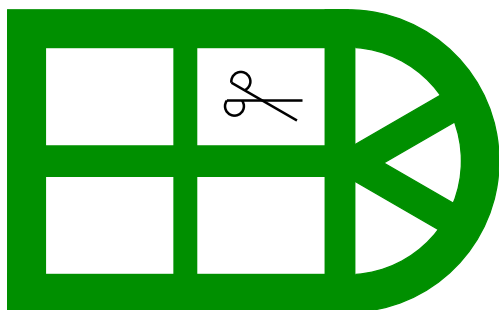
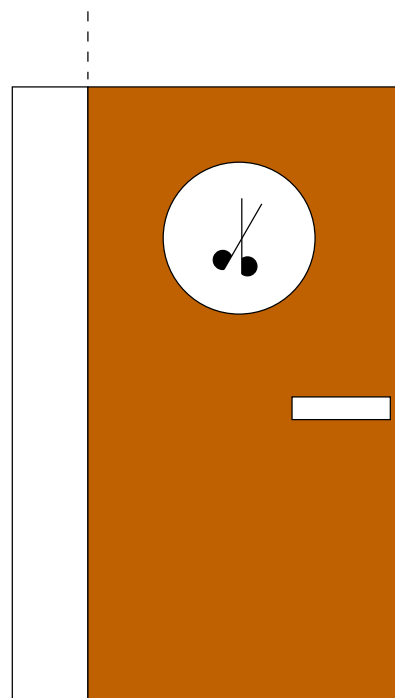
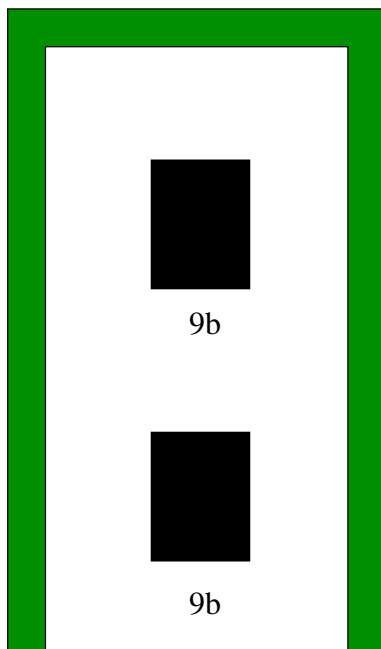
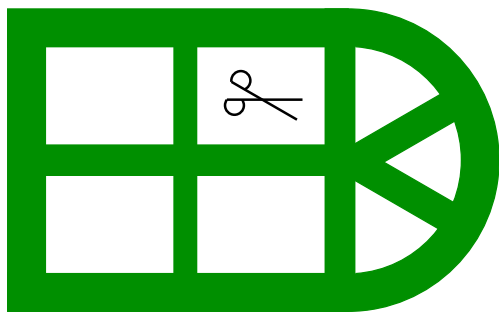
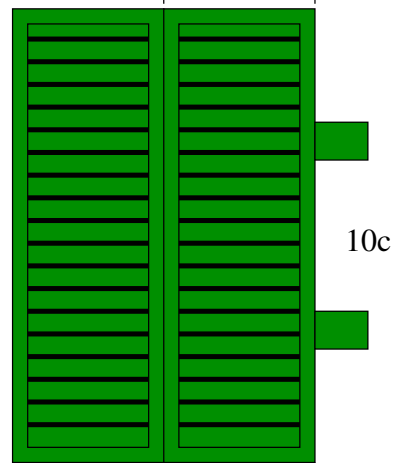
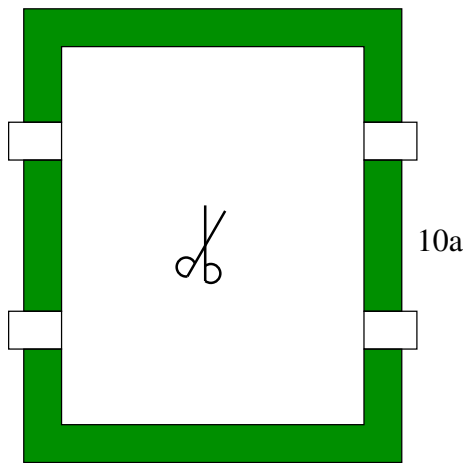
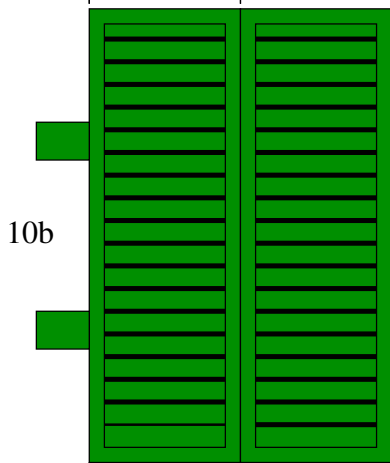
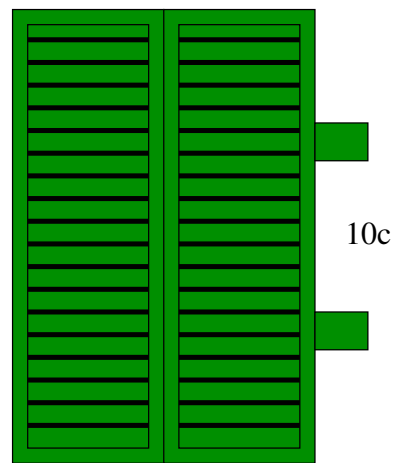
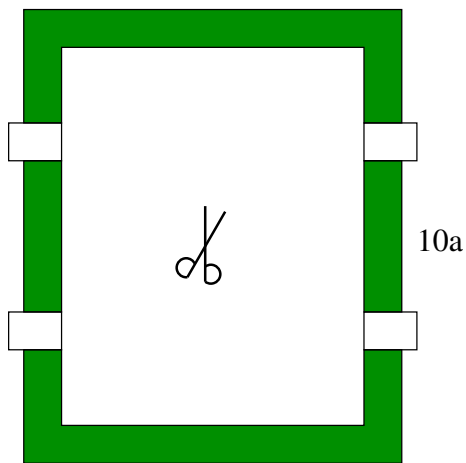
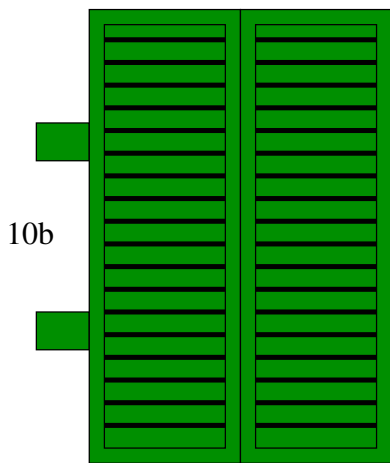


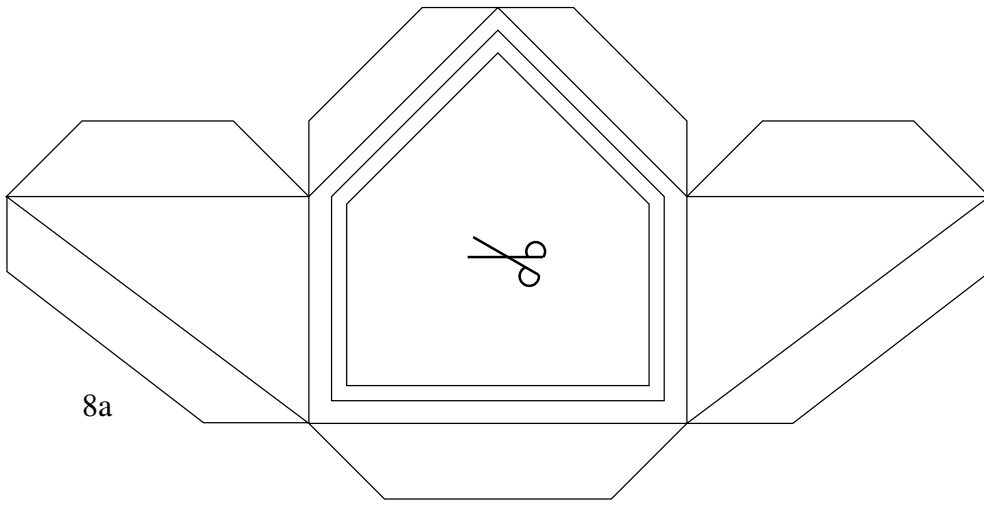
2a



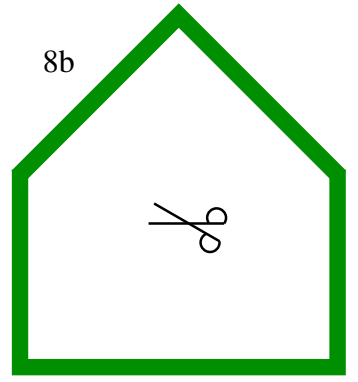
4a



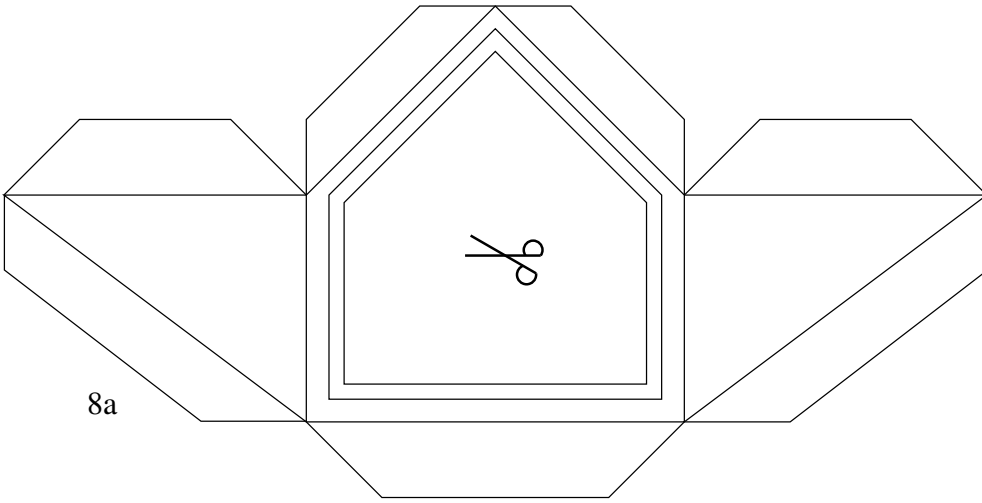




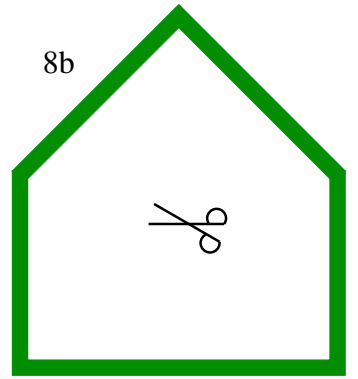
8a



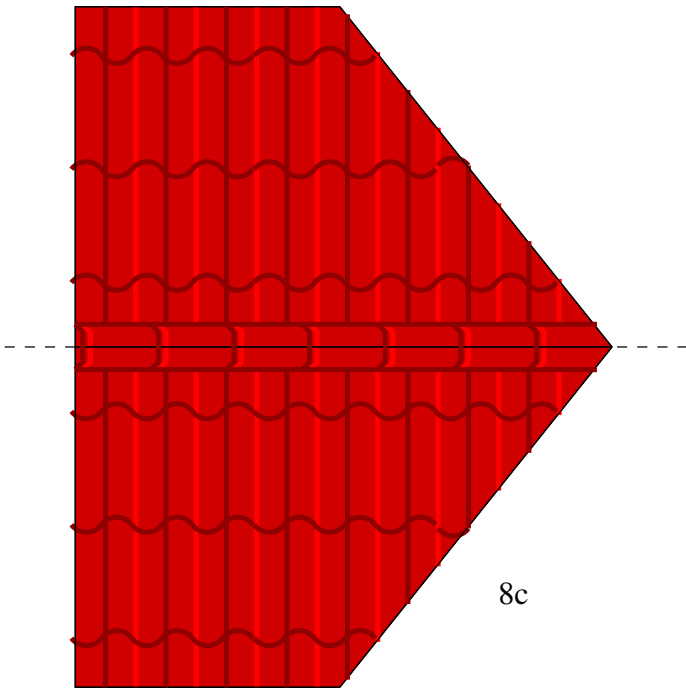
8b



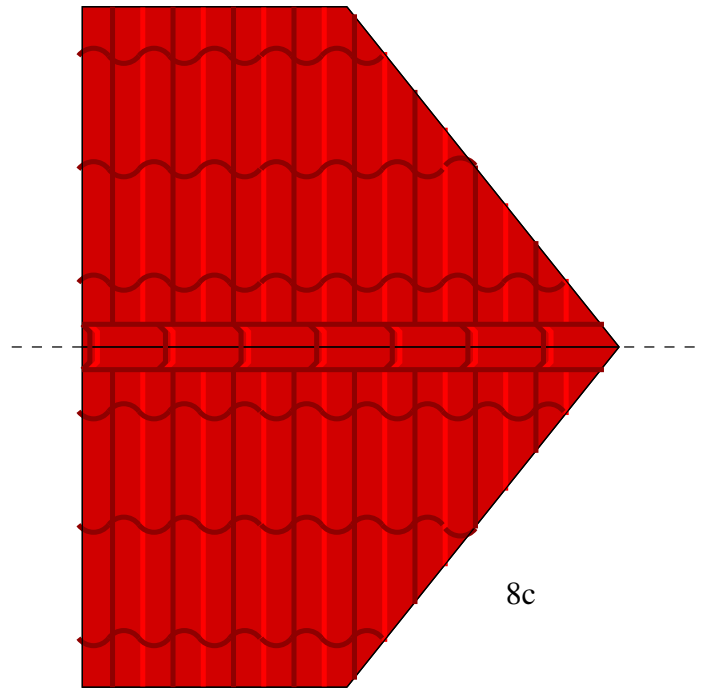
8a



8b



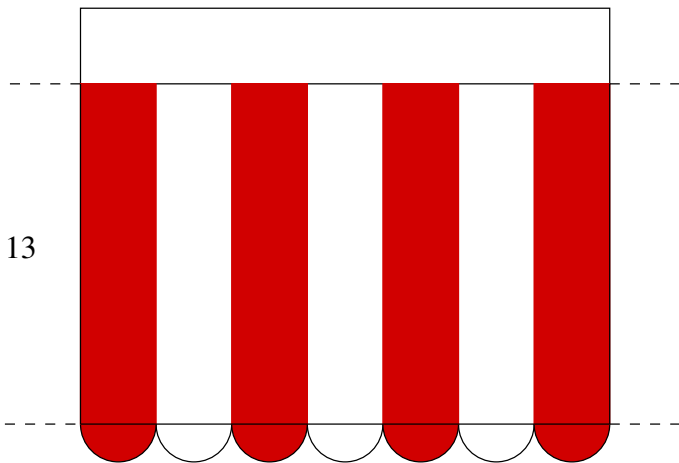
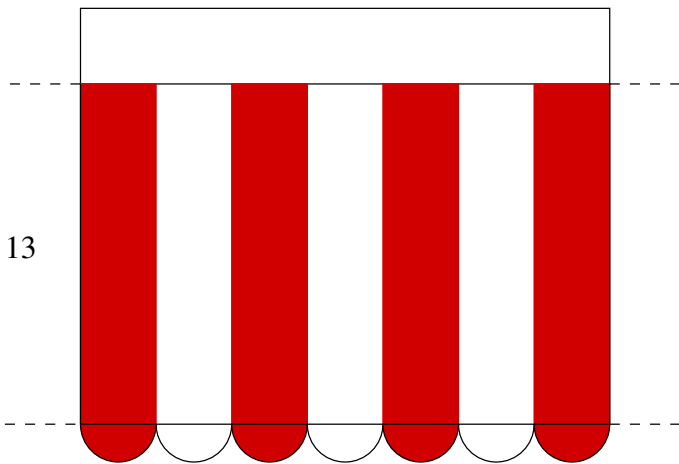
8c



8c

HOTEL

12



1

